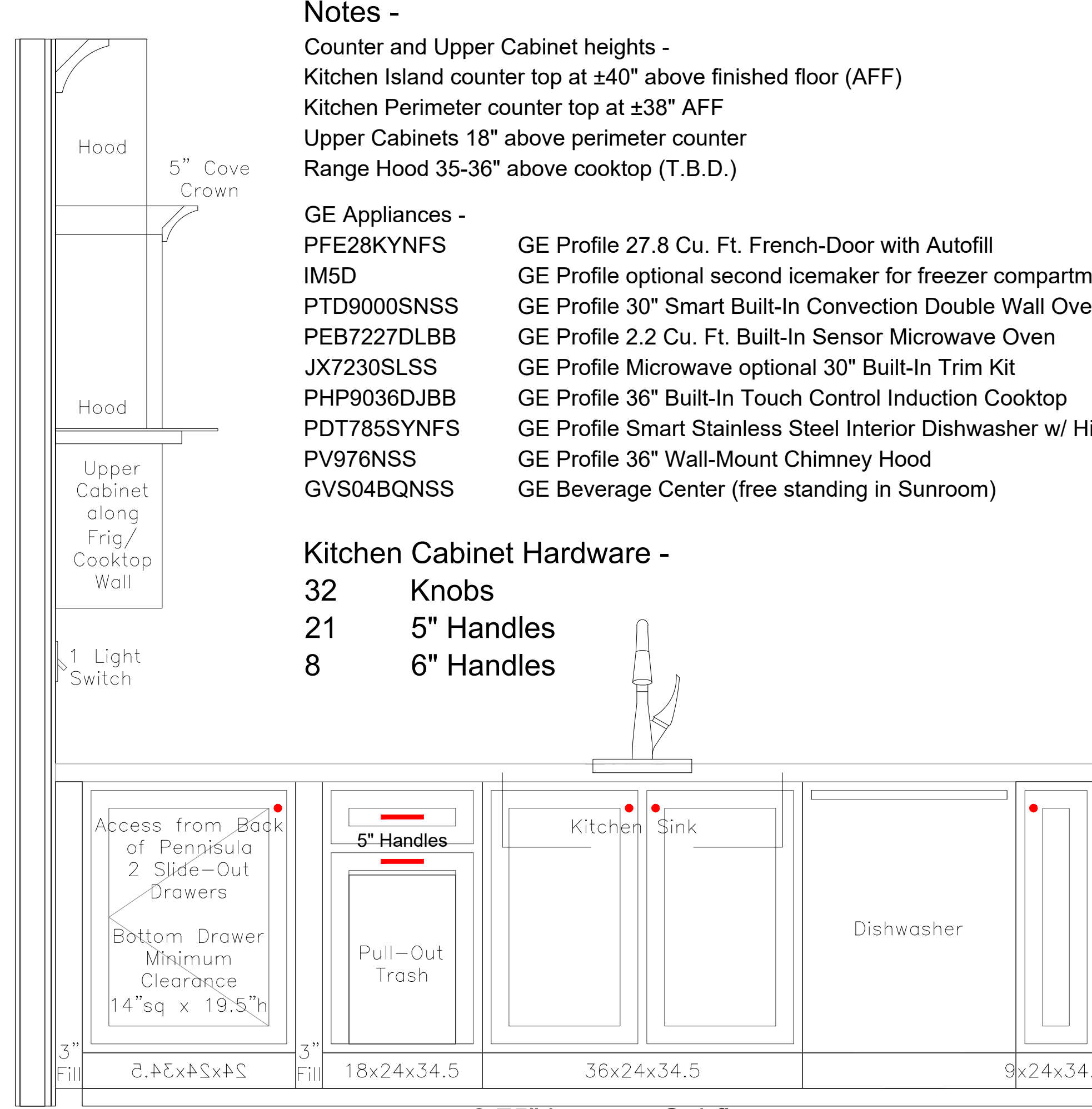
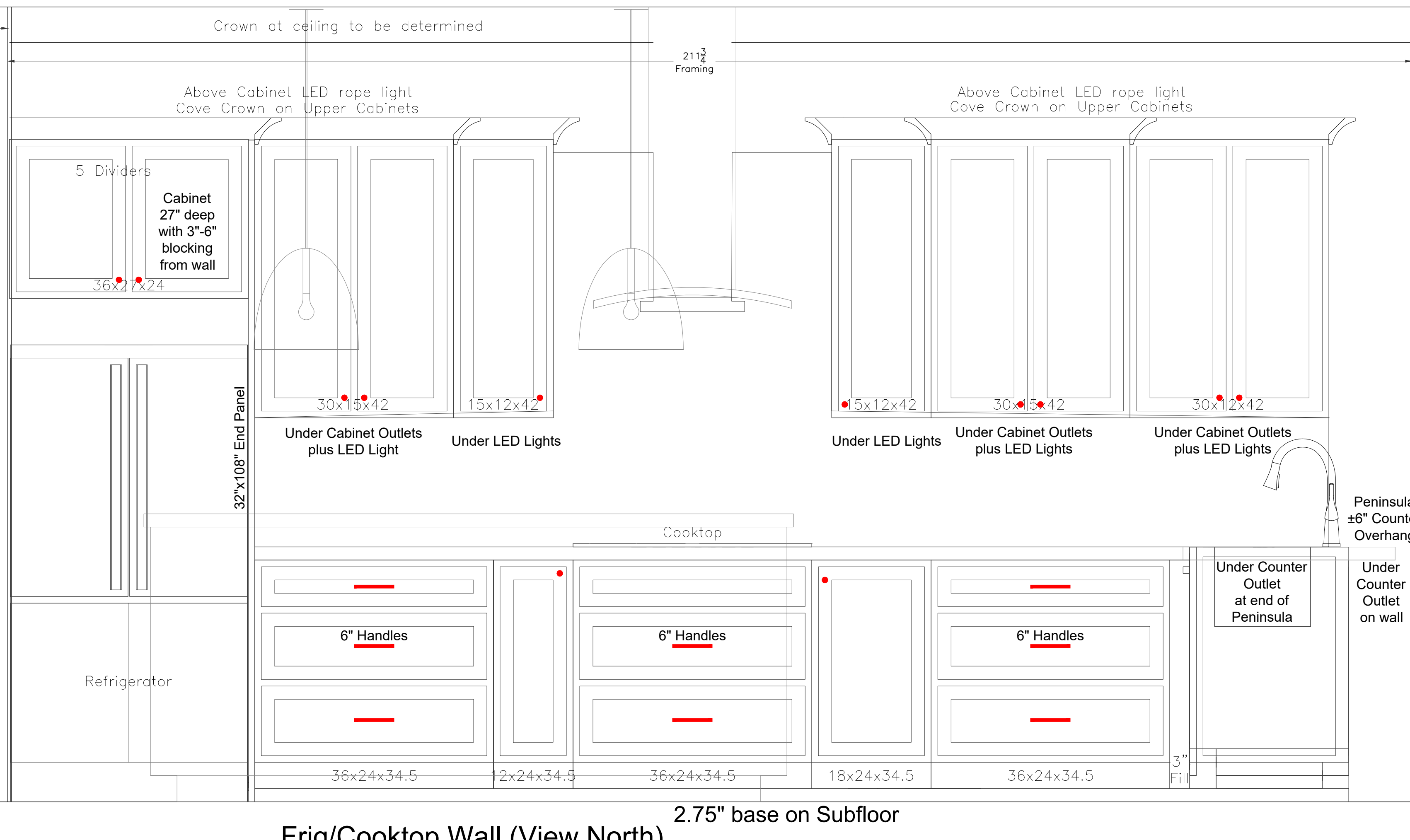
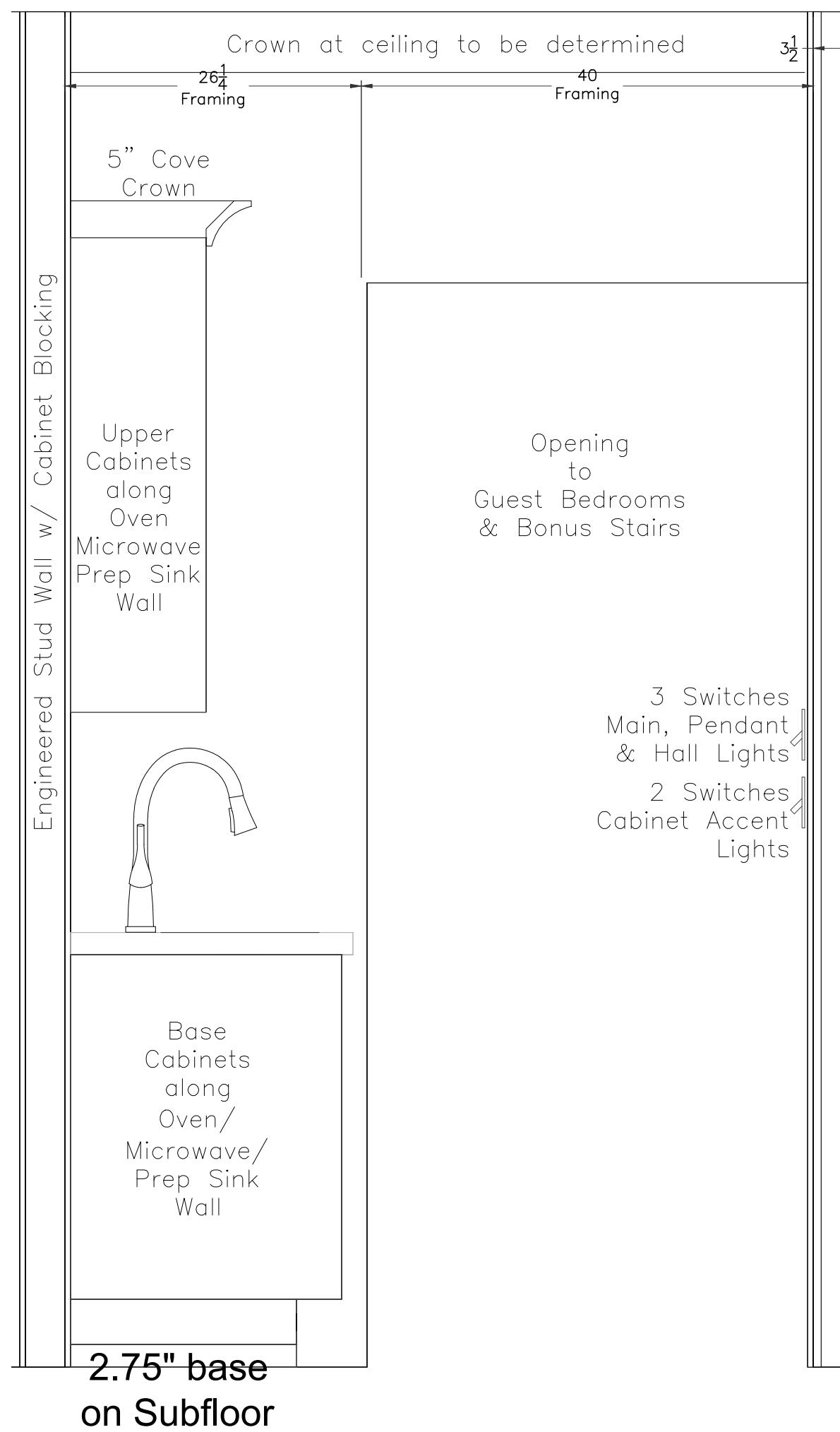


Oven/Microwave/Prep Sink Wall (View West)

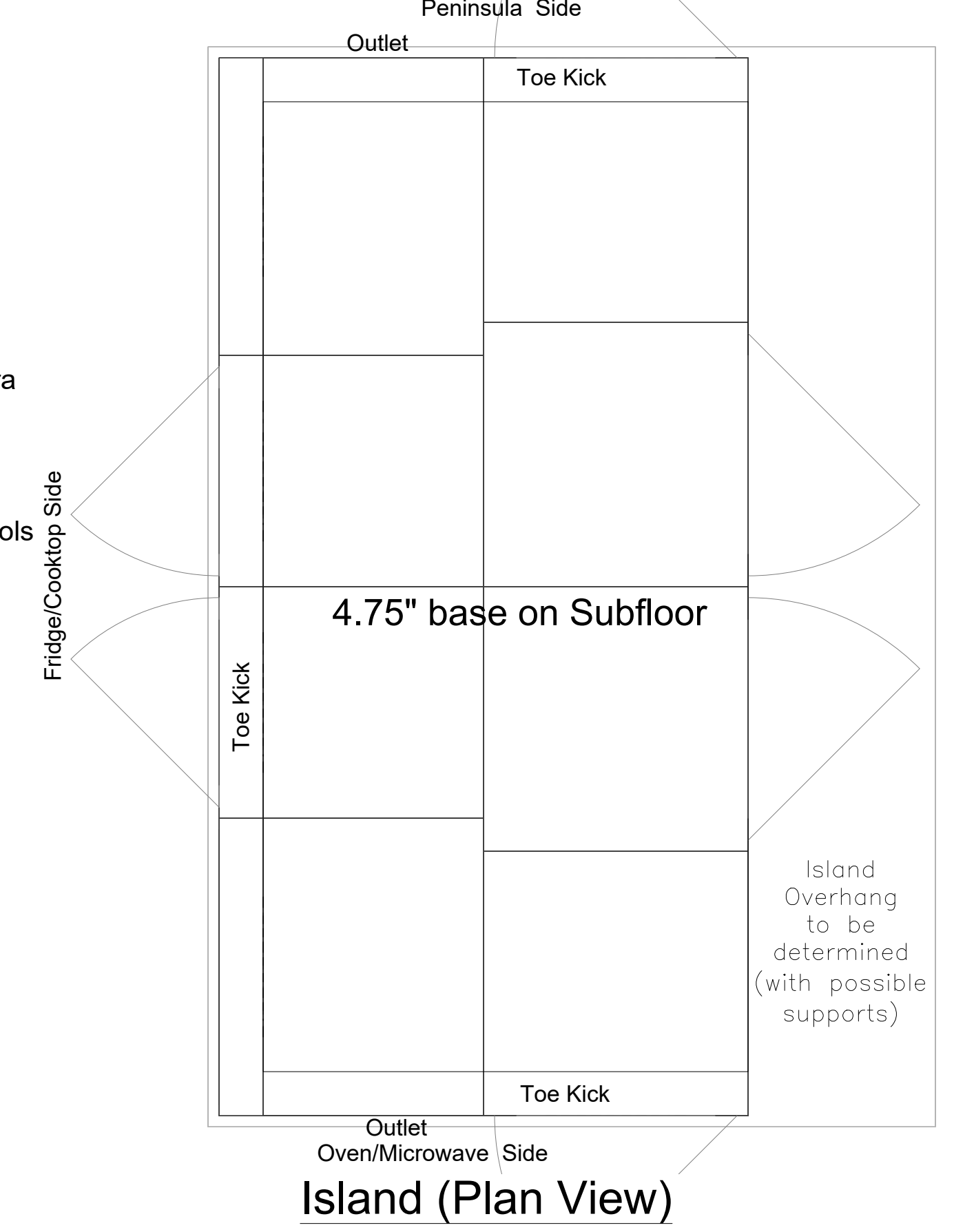


Peninsula (View East)

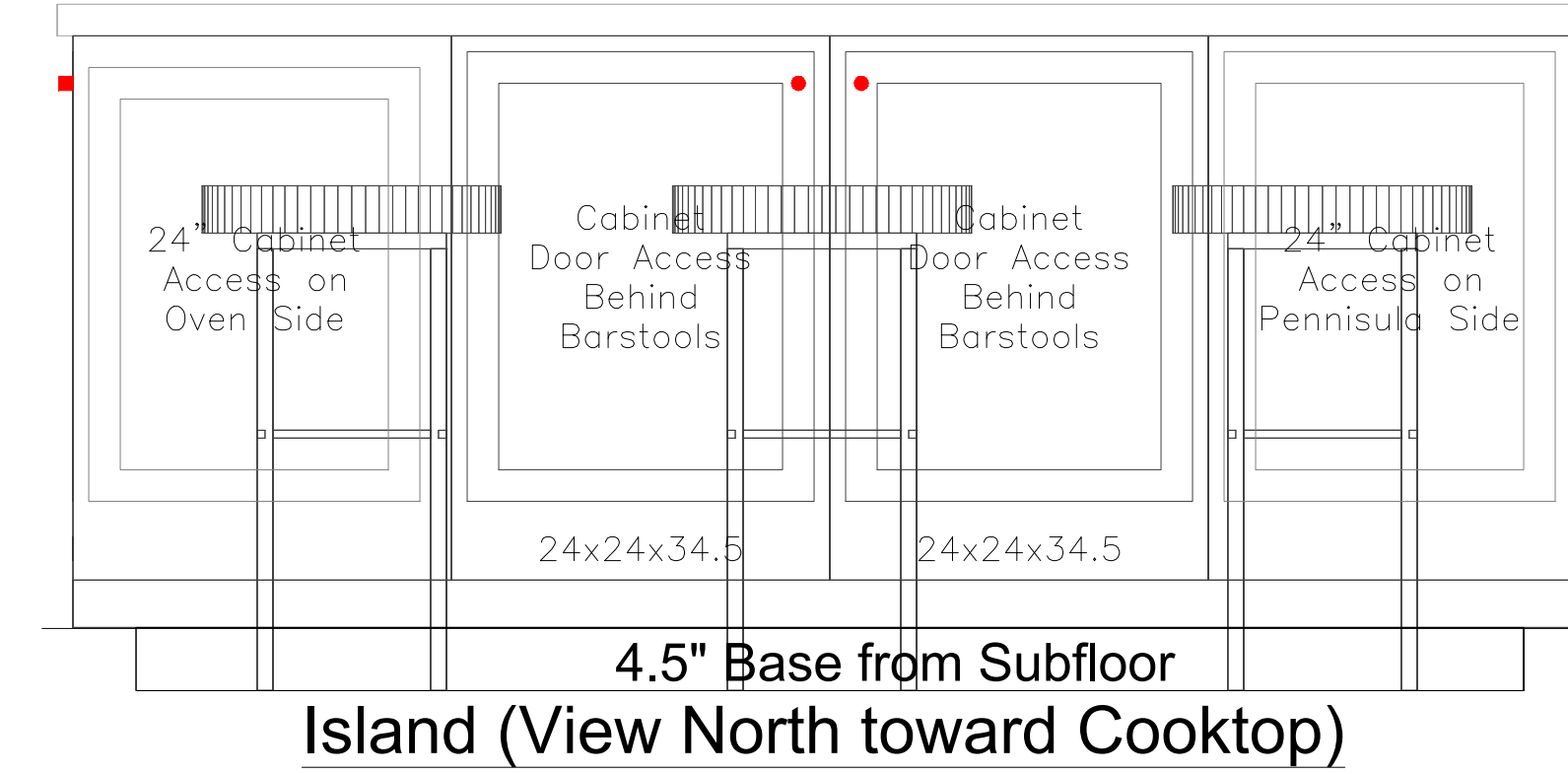


Frig/Cooktop Wall (View North)

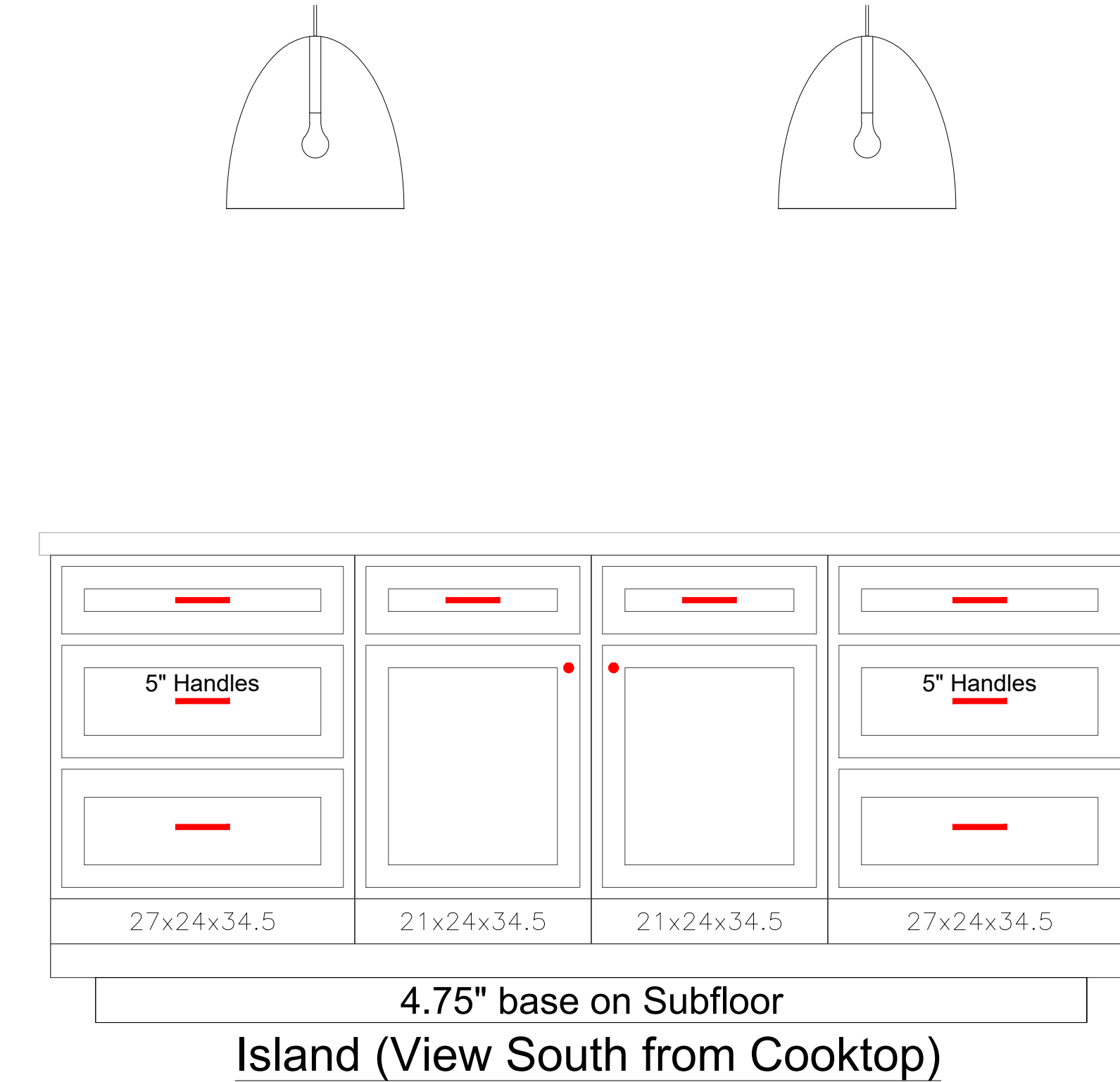
- Notes -**
- Counter and Upper Cabinet heights - Kitchen Island counter top at ±40" above finished floor (AFF)
 - Kitchen Perimeter counter top at ±38" AFF
 - Upper Cabinets 18" above perimeter counter
 - Range Hood 35-36" above cooktop (T.B.D.)
- GE Appliances -**
- PFE28KYNFS GE Profile 27.8 Cu. Ft. French-Door with Autofill
 - IM5D GE Profile optional second icemaker for freezer compartment
 - PTD9000SNSS GE Profile 30" Smart Built-In Convection Double Wall Oven w/ Camera
 - PEB7227DLBB GE Profile 2.2 Cu. Ft. Built-In Sensor Microwave Oven
 - JX7230SLSS GE Profile Microwave optional 30" Built-In Trim Kit
 - PHP9036DJBB GE Profile 36" Built-In Touch Control Induction Cooktop
 - PDT785SYNFS GE Profile Smart Stainless Steel Interior Dishwasher w/ Hidden Controls
 - PV976NSS GE Profile 36" Wall-Mount Chimney Hood
 - GVS04BQNSS GE Beverage Center (free standing in Sunroom)
- Kitchen Cabinet Hardware -**
- 32 Knobs
 - 21 5" Handles
 - 8 6" Handles



Island (Plan View)



Island (View North toward Cooktop)



Island (View South from Cooktop)

REVISIONS	DATE	BY

SHEET
Kitchen

DESIGNED: ARH
DATE: 2/10/21
SCALE: 1"=1'-0" at 24"x36"
DRAWING: Henderson.dwg
PROJECT NO: