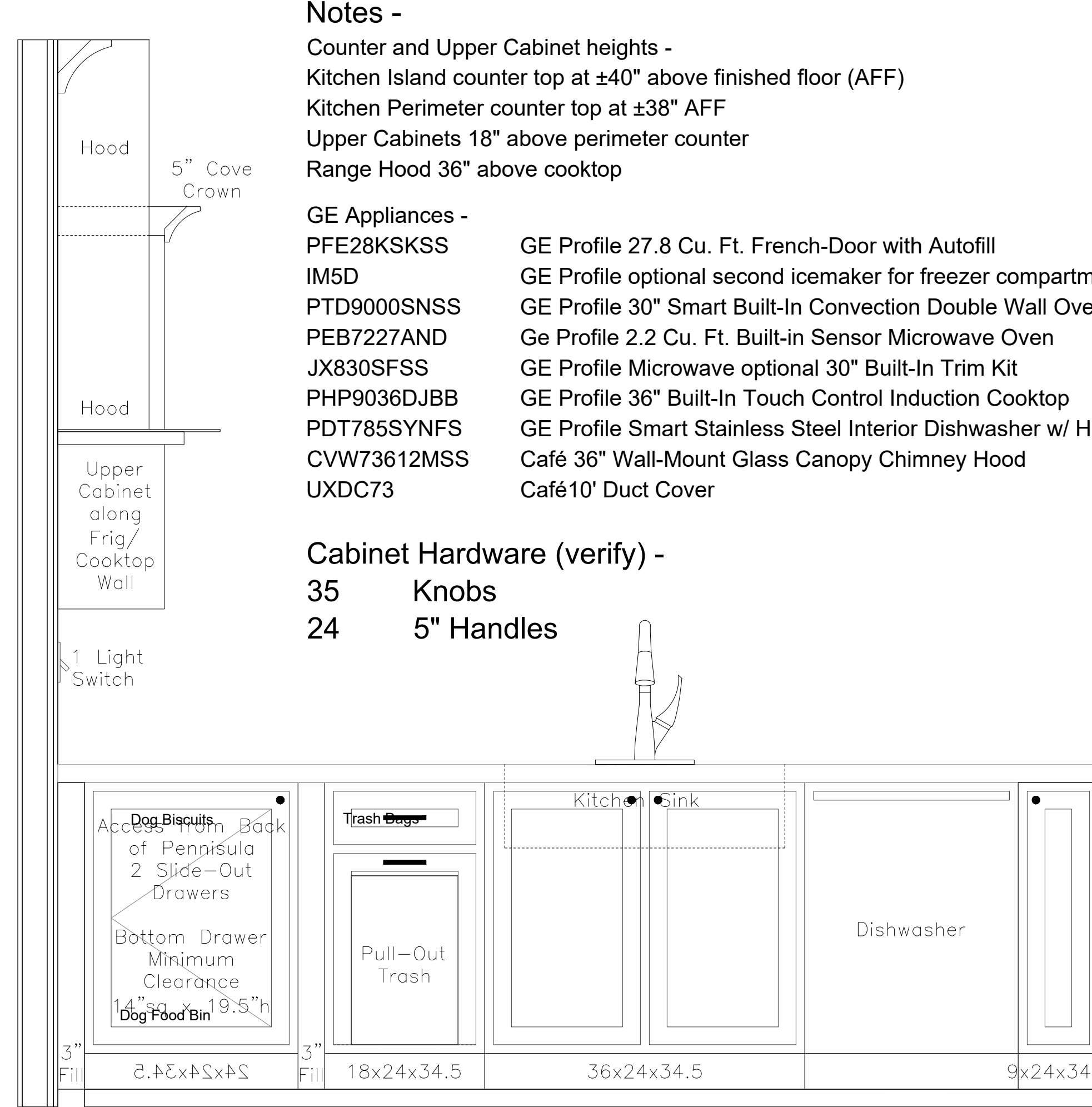


Oven/Microwave/Prep Sink Wall (View West)



Peninsula (View East)

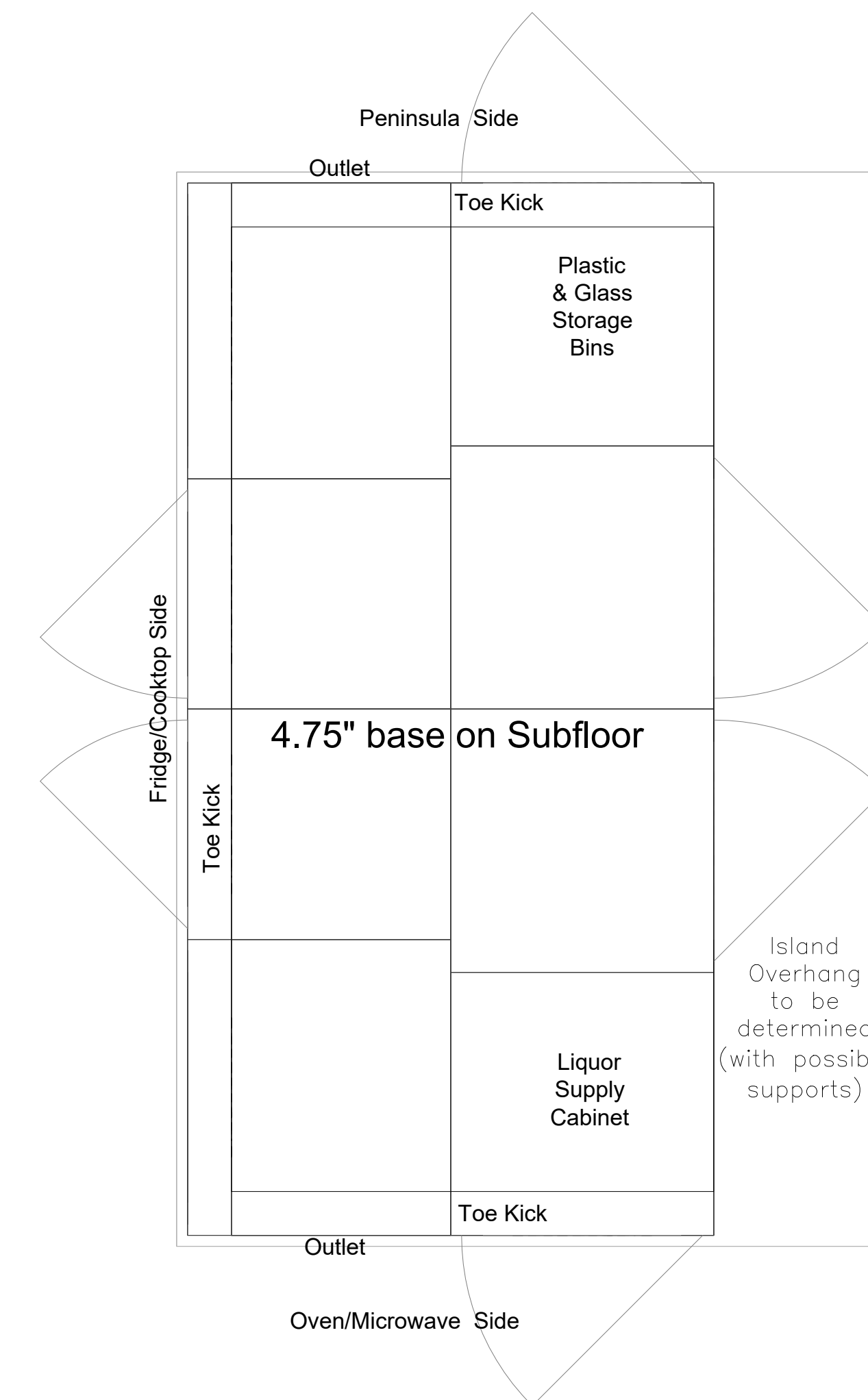
Notes -

- Counter and Upper Cabinet heights -
- Kitchen Island counter top at ±40" above finished floor (AFF)
- Kitchen Perimeter counter top at ±38" AFF
- Upper Cabinets 18" above perimeter counter
- Range Hood 36" above cooktop

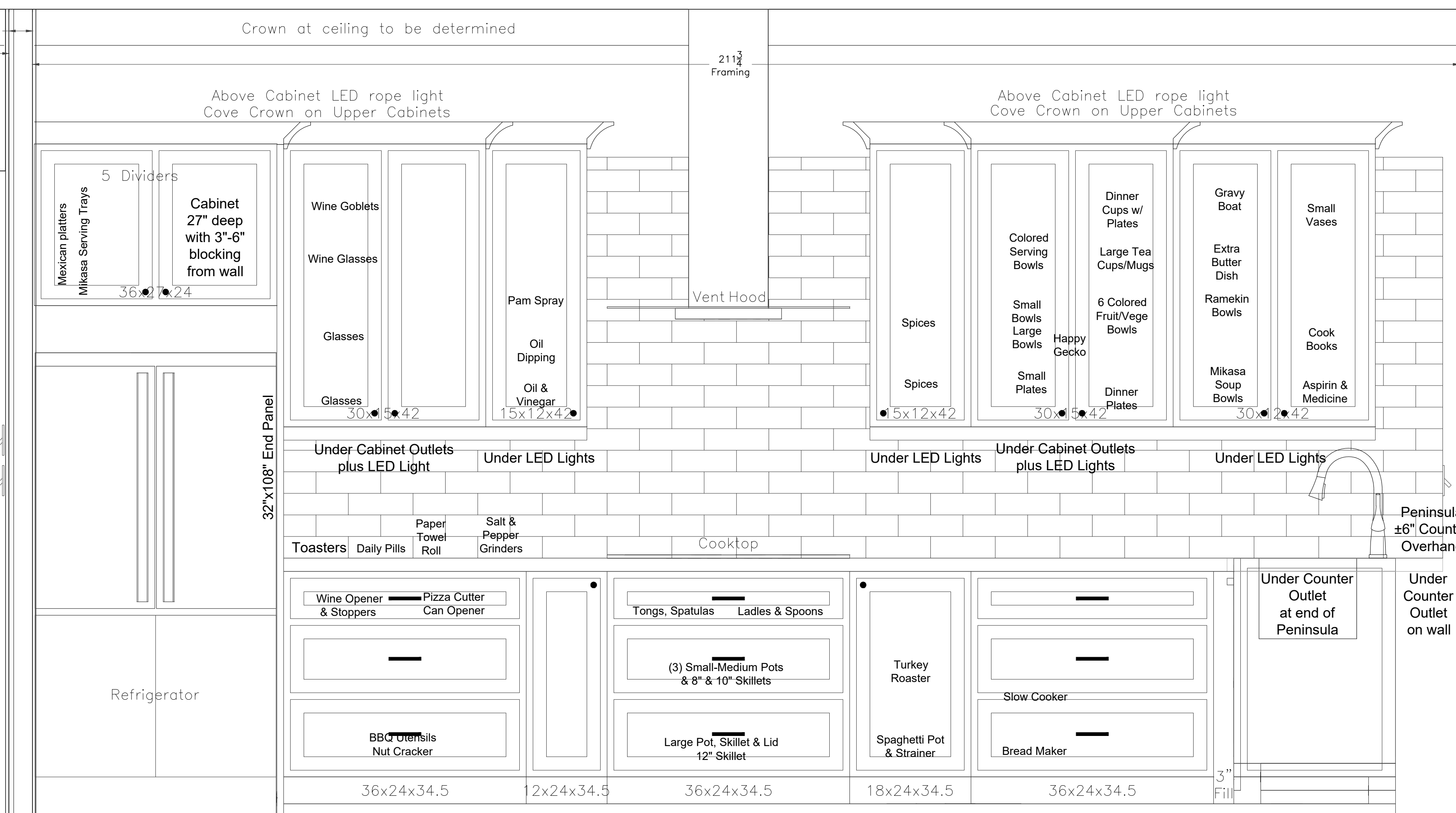
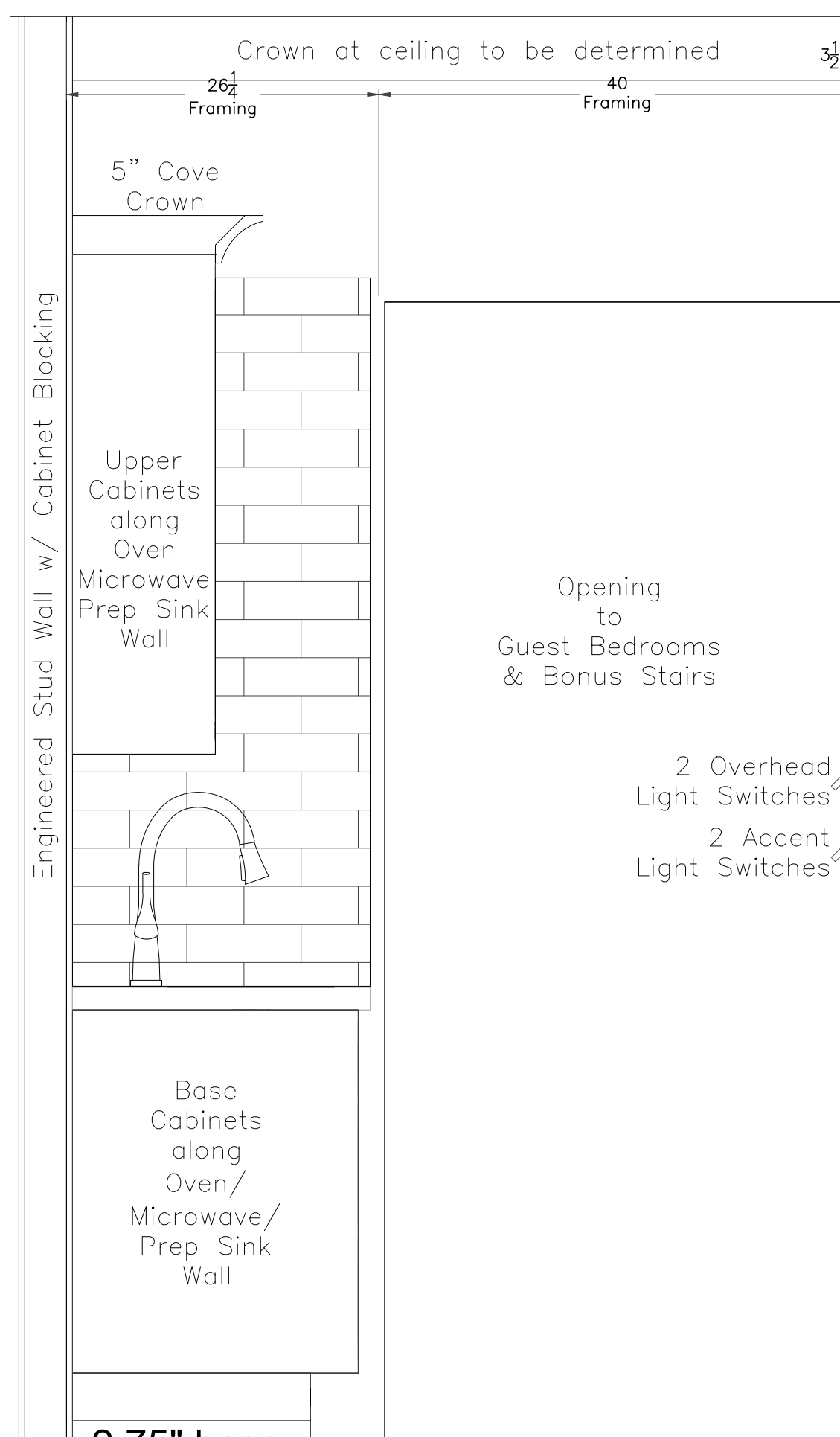
- GE Appliances -
- PFE28KS55 GE Profile 27.8 Cu. Ft. French-Door with Autofill
  - IM5D GE Profile optional second icemaker for freezer compartment
  - PTD9000SNSS GE Profile 30" Smart Built-In Convection Double Wall Oven
  - PEB7227AND GE Profile 2.2 Cu. Ft. Built-in Sensor Microwave Oven
  - JX830SFSS GE Profile Microwave optional 30" Built-In Trim Kit
  - PHP9036DJBB GE Profile 36" Built-In Touch Control Induction Cooktop
  - PDT785SYNFS GE Profile Smart Stainless Steel Interior Dishwasher w/ Hidden Controls
  - CVW73612MSS Café 36" Wall-Mount Glass Canopy Chimney Hood
  - UXDC73 Café 10' Duct Cover

Cabinet Hardware (verify) -

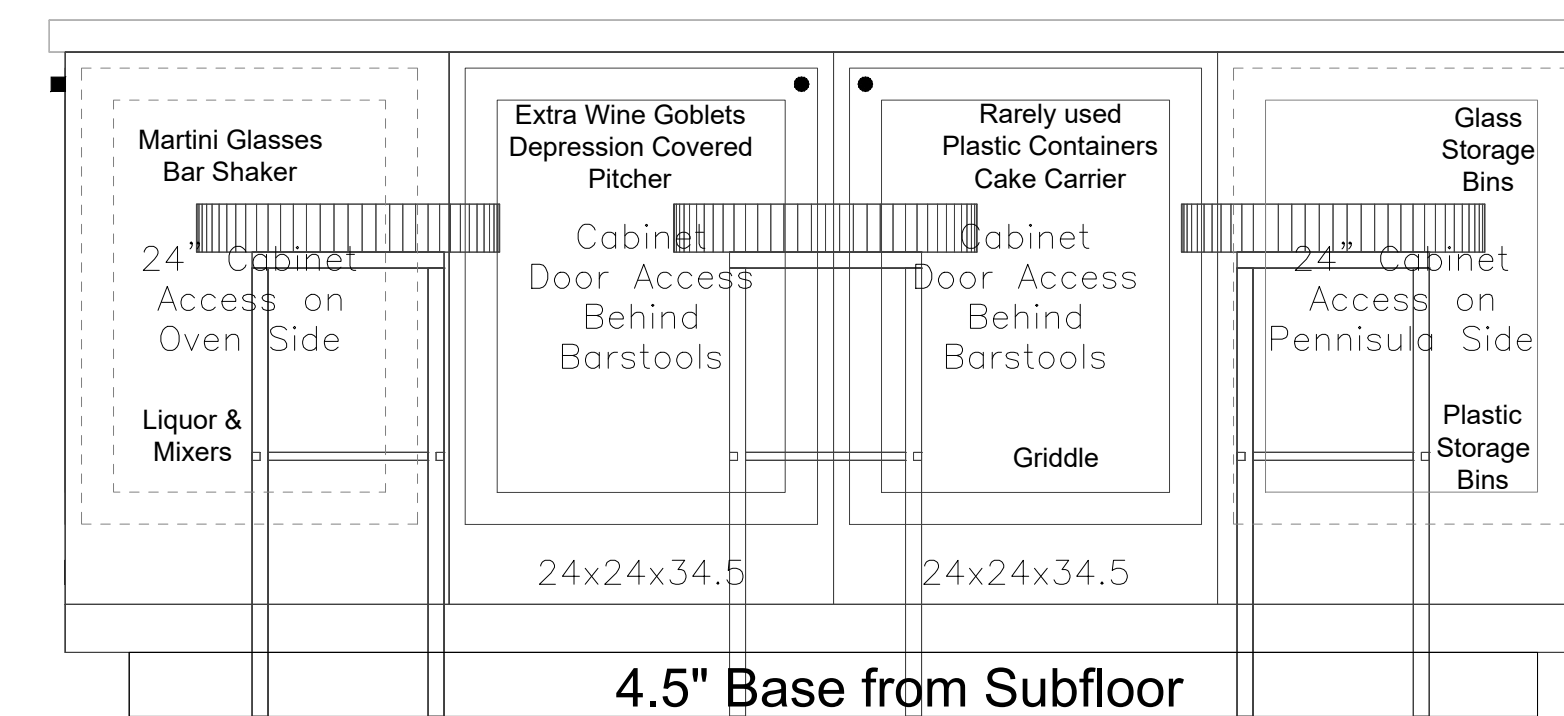
- 35 Knobs
- 24 5" Handles



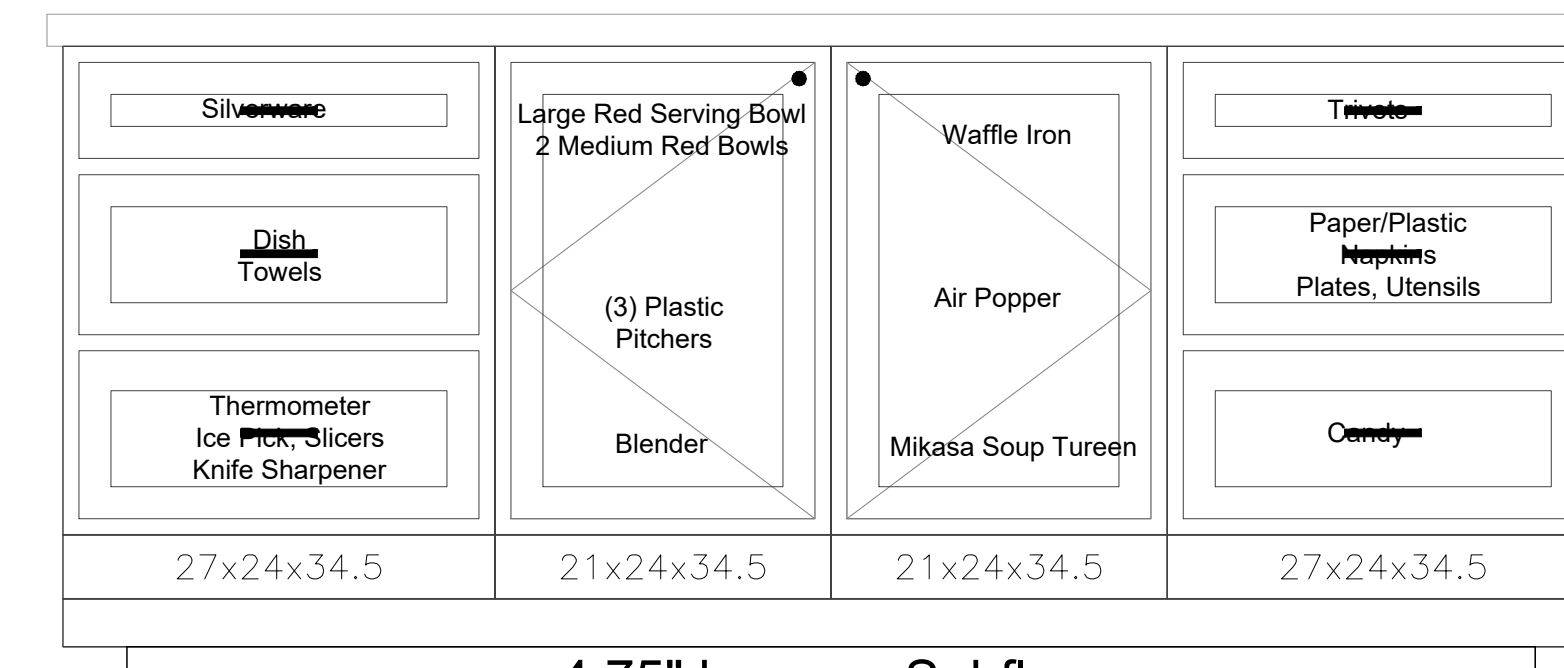
Island (Plan View)



Frig/Cooktop Wall (View North)



Island (View North toward Cooktop)



Island (View South from Cooktop)

| REVISIONS | DATE | BY |
|-----------|------|----|
|           |      |    |
|           |      |    |
|           |      |    |
|           |      |    |

SHEET

## Kitchen

DESIGNED: ARH  
DATE: 8/5/20  
SCALE: 1"=1'-0" at 24"x36"  
DRAWING: Henderson.dwg  
PROJECT NO: